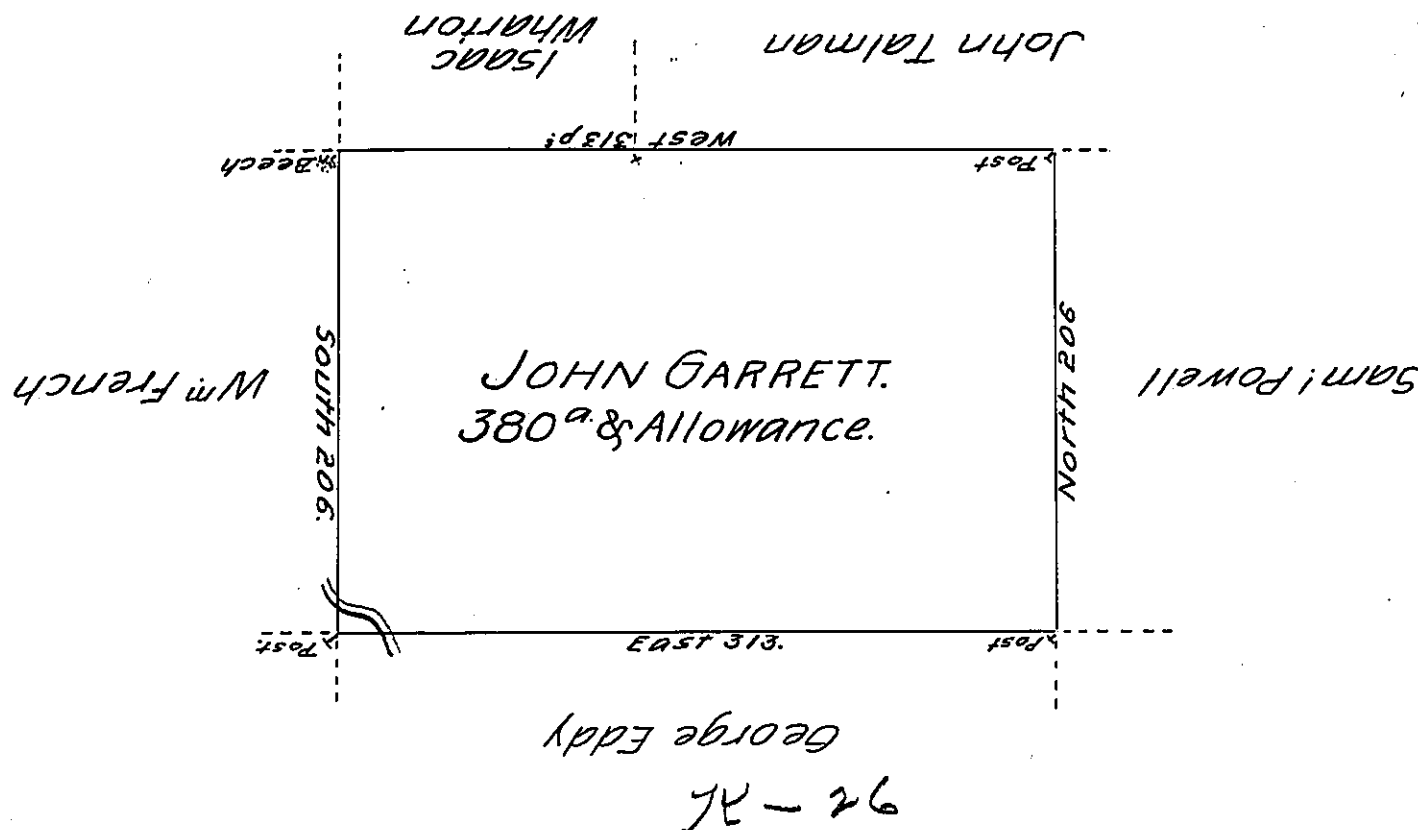


c 225-283

c 217-266



A Draught of a Tract of Land Called _____ Situate on the Waters of Snake Creek, Adjoining Land of George Eddy, and others in Stoke Township, -Northumberland County, - Surveyd on the 23^d day of September 1786 for John Garrett, by Virtue of his Warrant, dated the 18th day of July 1786. Containing three Hundred and Eighty Acres, and allowance of Six p. Cent for Roads &c. by

W^m Gray D.S.

To John Lukens Esq^e }
 Surveyor Gen^l } - now Luzerne County.

IN TESTIMONY that the above is a copy of the original remaining on file in the Department of Internal Affairs of Pennsylvania, made conformably to an Act of Assembly approved the 16th day of February, 1833, I have hereunto set my Hand and caused the Seal of said Department to be affixed at Harrisburg, this eighth day of December 1904.

Loac P. Brown
 Secretary of Internal Affairs.